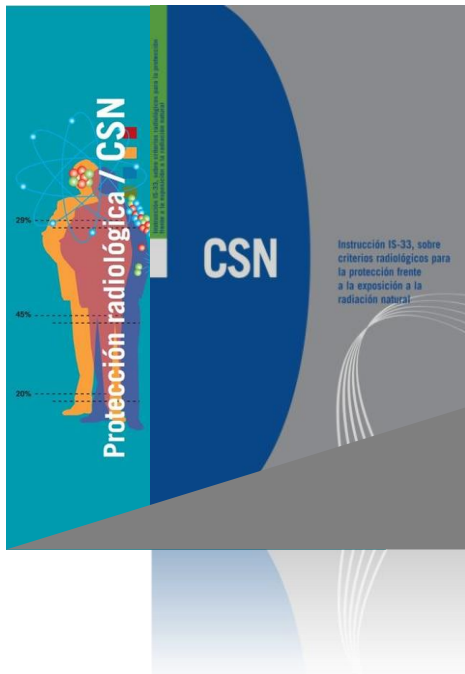




# ***Radon Regulation in Spain***

**Marta García-Talavera (CSN)**

## Regulatory Framework



1. National Radon Action Plan
2. Workplace Regulation
3. Building Regulation

# Diario Oficial de la Unión Europea



Edición  
en lengua española

Legislación

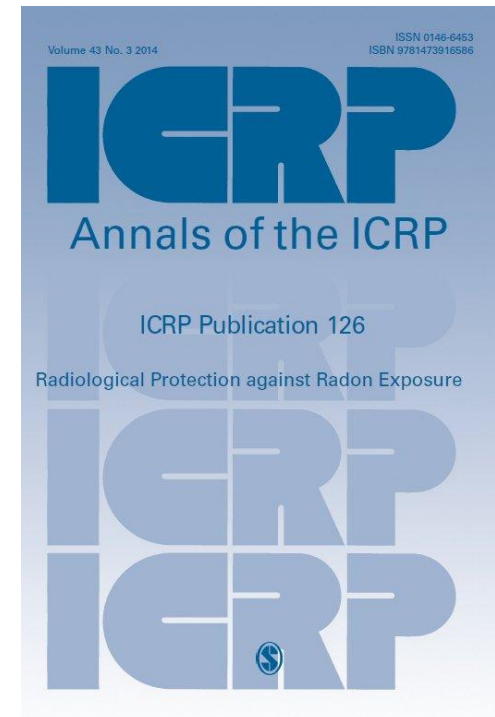
ISSN 1977-0683  
**L 13**  
57º año  
17 de enero de 2014

Sumario

II *Actos no legislativos*

DIRECTIVAS

- ★ Directiva 2013/59/Euratom del Consejo, de 5 de diciembre de 2013, por la que se establecen normas de seguridad básicas para la protección contra los peligros derivados de la exposición a radiaciones ionizantes, y se derogan las Directivas 89/618/Euratom, 90/641/Euratom, 96/29/Euratom, 97/43/Euratom y 2003/122/Euratom ..... 1



**Transposition & Implementation:** Assignment of responsibilities, legal certainty, basic infrastructure, service providing, capacity building, regulatory enforcement, NRA's human resources, public information, etc.

1.

# Radon Action Plan



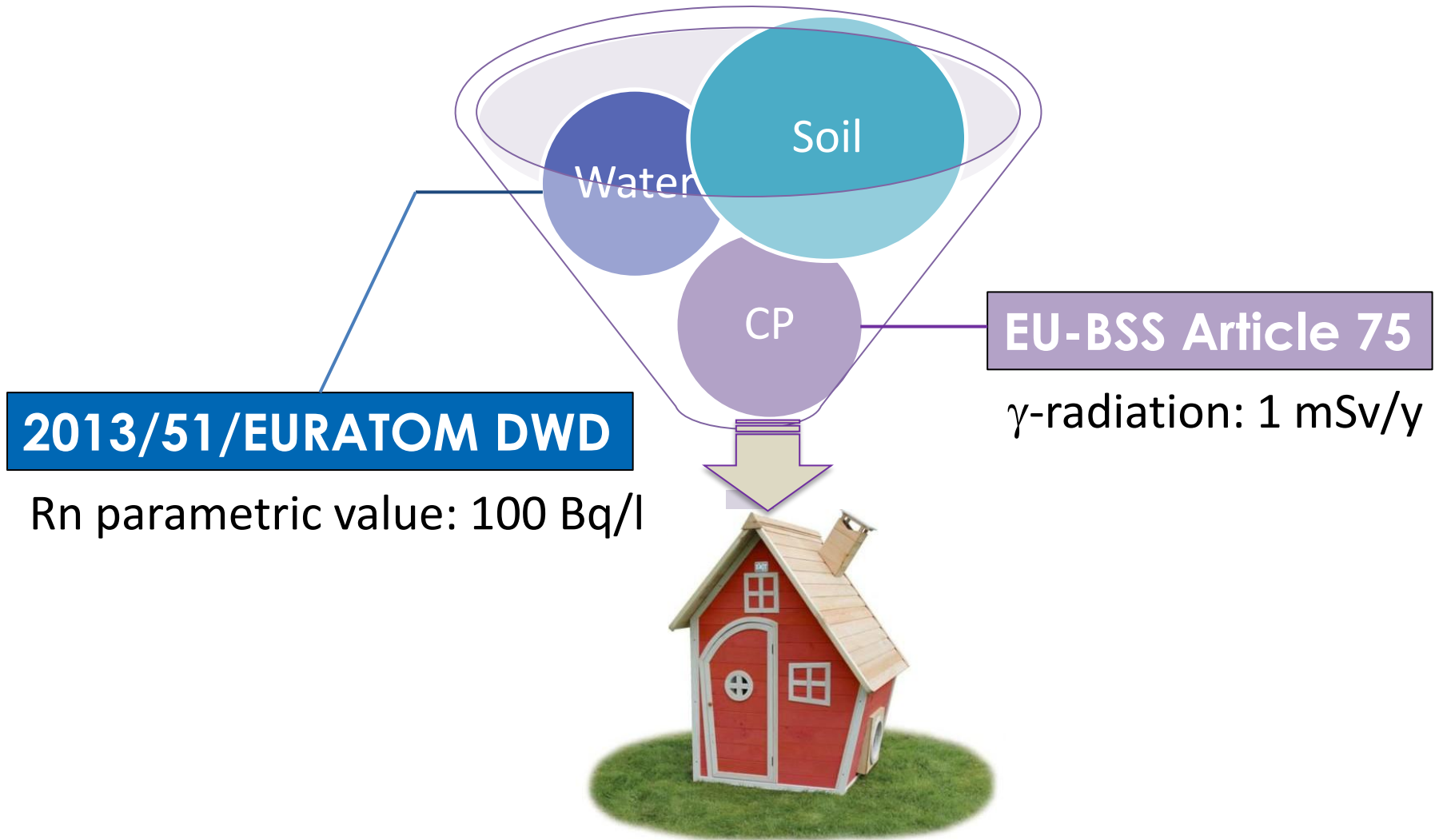
# National Radon Action Plan

***Directive 2013/59/EURATOM Article 103***

1.

# Radon Action Plan

**EU-BSS Article 103:** “... for any source of radon ingress”.



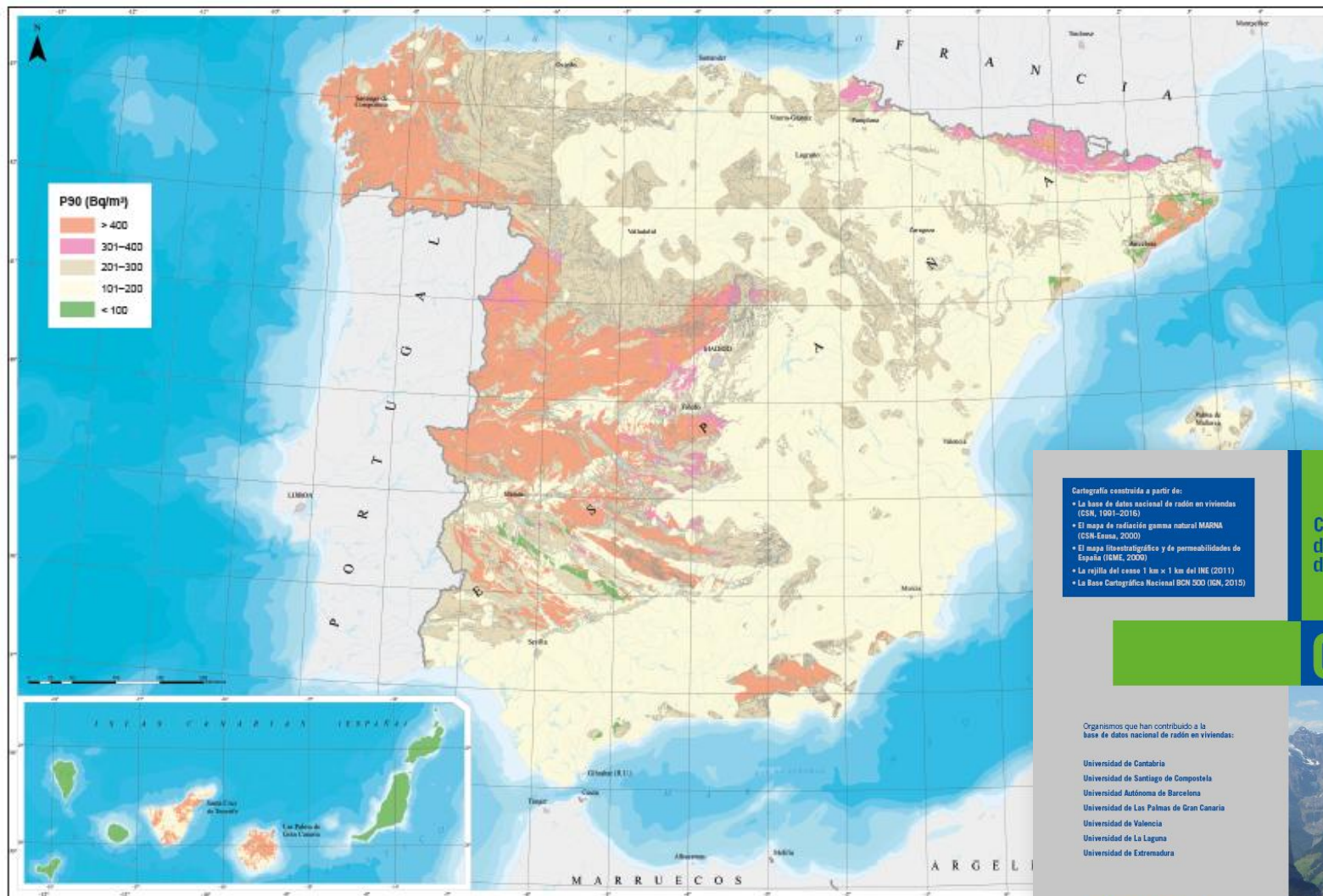
**2013/51/EURATOM DWD**

Rn parametric value: 100 Bq/l

**EU-BSS Article 75**

$\gamma$ -radiation: 1 mSv/y

García-Talavera et al. 2013 J. Radiol. Prot. 33 605



Cartografía construida a partir de:

- La base de datos nacional de radón en viviendas (CSN, 1001-2016)
- El mapa de radiación gamma natural MARNA (CSN-Esnaa, 2000)
- El mapa litostratigráfico y de permeabilidades de España (IGME, 2000)
- La rejilla del censo 1 km × 1 km del INE (2011)
- La Base Cartográfica Nacional BCN 500 (IGN, 2015)

CARTOGRAFÍA  
del POTENCIAL DE RADÓN  
de España

CSN

Organismos que han contribuido a la  
base de datos nacional de radón en viviendas:

Universidad de Cantabria  
Universidad de Santiago de Compostela  
Universidad Autónoma de Barcelona  
Universidad de Los Palmas de Gran Canaria  
Universidad de Valencia  
Universidad de La Laguna  
Universidad de Extremadura

Mapas disponibles en la web del CSN:  
<https://www.csn.es/radon>

Rn reference level: 300 Bq/m<sup>3</sup> (Article 54.1)

1.

# Radon Action Plan



## Regulation on Health Protection Against Ionising Radiation (2001)

- Work activities involving increased exposure of workers or the public to **natural ionising radiation**





1. Underground workplaces (caves, mines...)
2. Workplaces processing or using groundwater
3. Workplaces in RADON PRONE AREAS (**EU-BSS Article 54.2**)

**CSN IS-33**



### **New RP Framework Regulation (2019)**

- **Notification:  $> 300 \text{ Bq/m}^3$  (Article 54.3)**
  - **Workers  $> 6 \text{ mSv/y}$ , Planned exposure situation (Article 35.2)**  
(area classification & signage, area and personal dose monitoring, dose limitation, PPE, record keeping and information)
  - **Workers  $< 6 \text{ mSv/y}$ , Re-test Rn levels every 5 years**

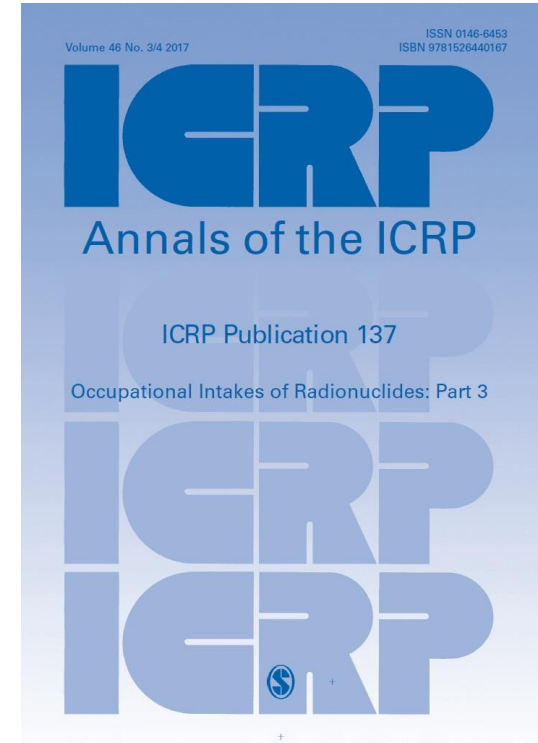
## 2. Workplace Regulation

- **Dose assessment**

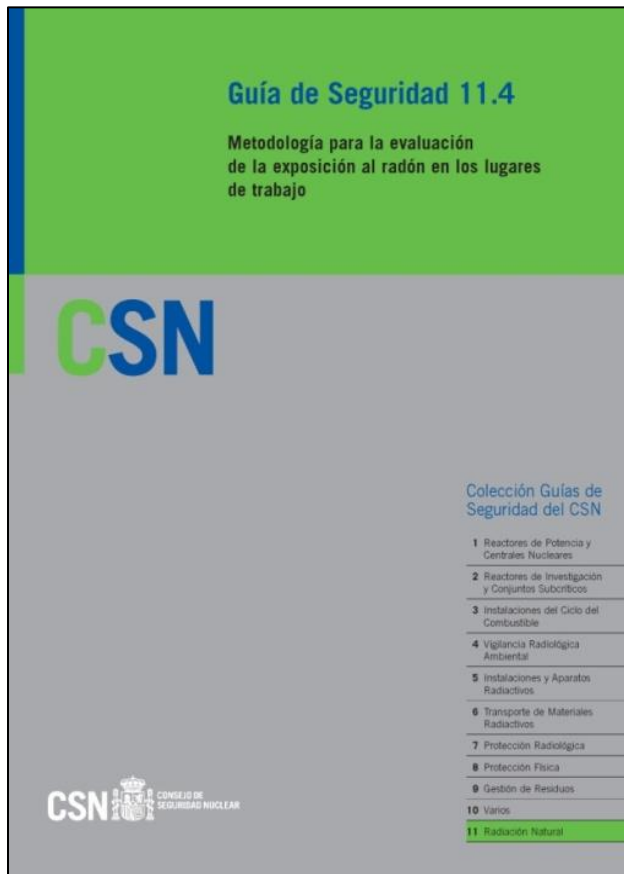
For inhaled Rn-222 + progeny:

- **3 mSv per mJ h m<sup>-3</sup>** in most circumstances
- **6 mSv per mJ h m<sup>-3</sup>** for tourist caves, work involving substantial physical activity

- CSN to release guidance on cases requiring site-specific calculations



## CSN Safety Guide 11.4

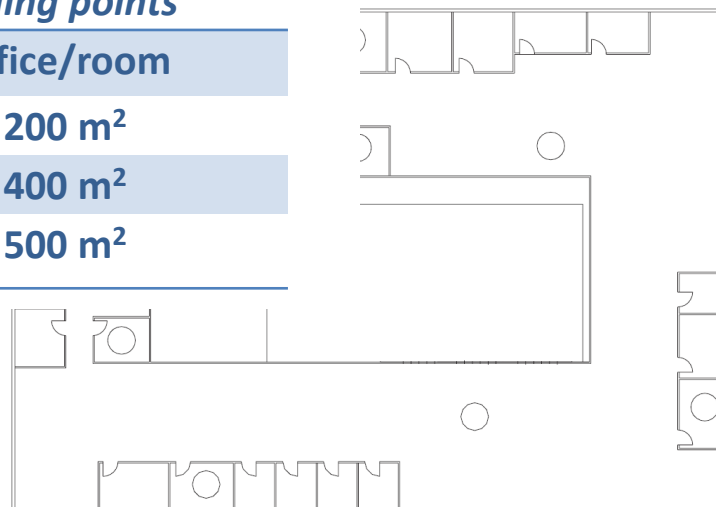


## SG 11.4: Spatial sampling design

- ✓ Divide the workplace into **Homogeneous Radon Areas** (e.g.: individual rooms; HVAC zones. Consider: temperature gradients; room usage, fixed work areas, etc.)
- ✓ Place at least one detector per HRA, with a minimum of 2 detectors per workplace

<i>Total certified area within premises</i>	<i>Minimum number of sampling points</i>
<b>Public-use buildings; offices</b>	<b>1 per office/room</b>
< 1000 m <sup>2</sup>	1 per 200 m <sup>2</sup>
1000-5000 m <sup>2</sup>	1 per 400 m <sup>2</sup>
> 5000 m <sup>2</sup>	1 per 500 m <sup>2</sup>

*Adapted from RPII*



## 2. Workplace Regulation

### SG 11.4: Spatial sampling design

- ✓ For large spaces classified as HRA with several fixed work areas, perform  $\chi^2$  test:

$$\frac{S_{ext}^2}{S_{int}^2} = \chi_R^2$$

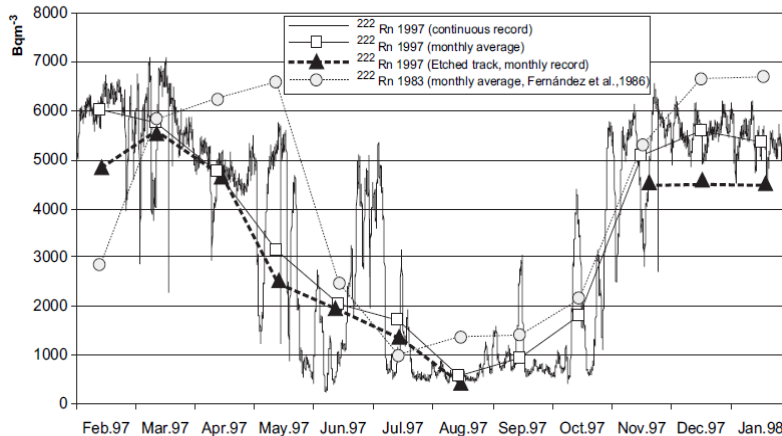


- ✓ PASS Assign sample average
- ✓ FAIL For fixed work areas, assign value of closest detector

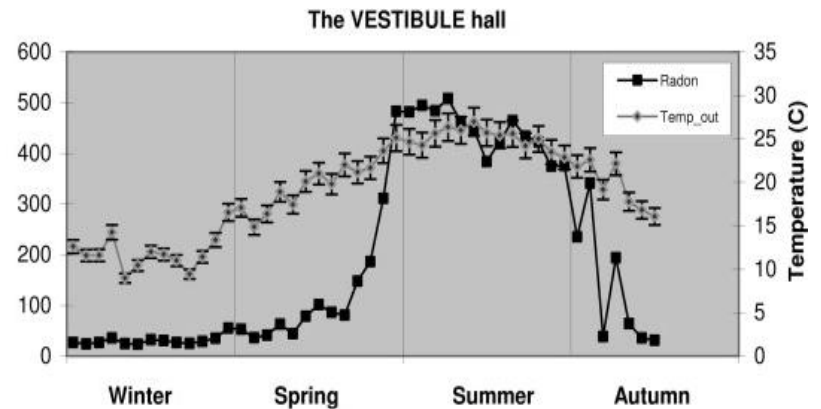
## 2. Workplace Regulation

### SG 11.4: Temporal sampling design: Seasonality

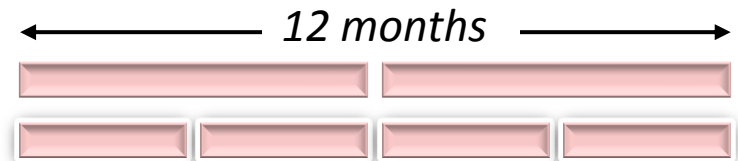
- Underground workplaces: 1 full year (open-season) exposure \*



Altamira cave, Spain (Lario et al., 2005)



Nerja cave, Spain (Dueñas et al., 2011)

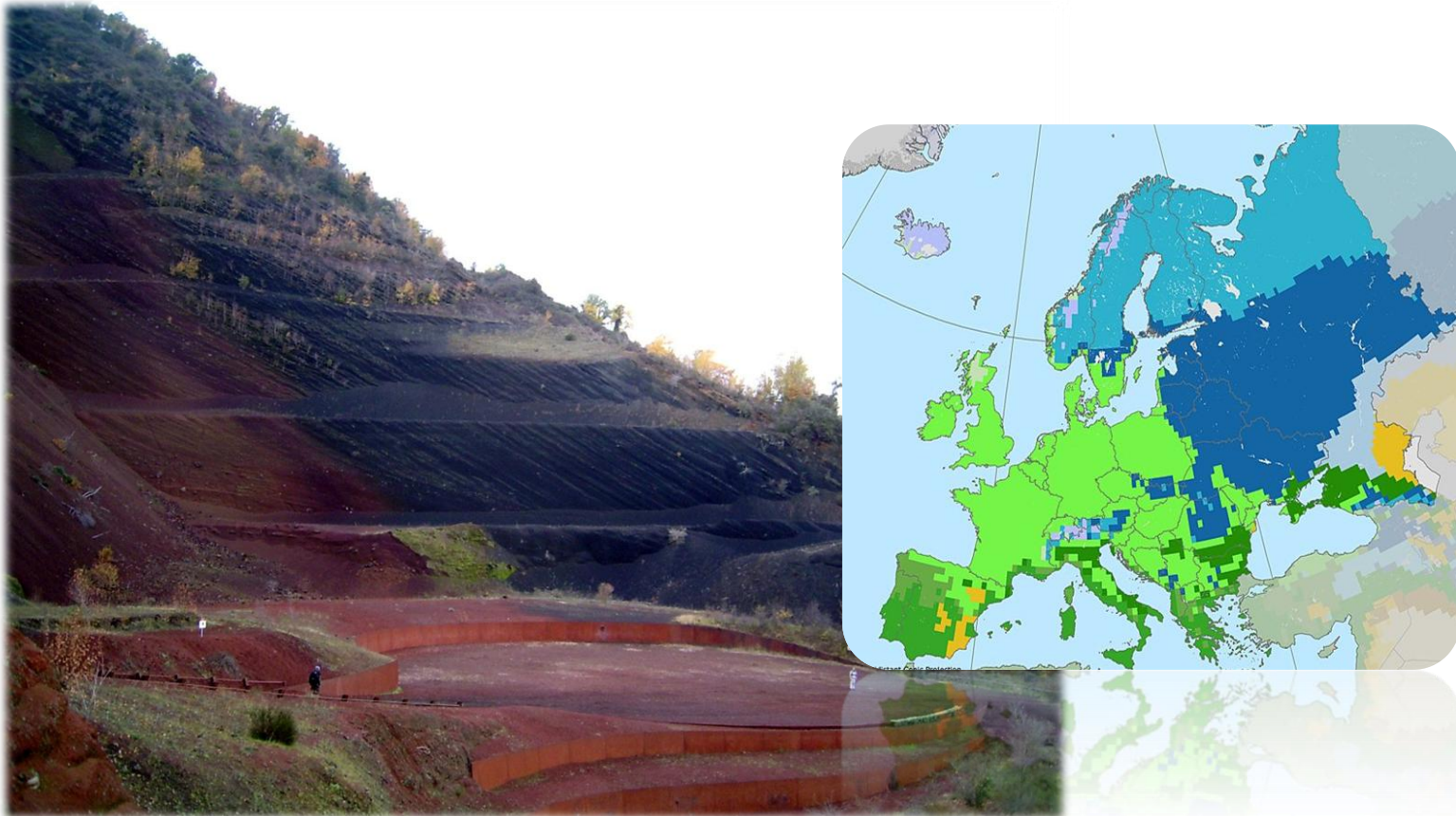


Take prompt action if 1<sup>st</sup> 3/6-month measurement results elevated

## 2. Workplace Regulation

- Other workplaces: > 3 months during the heating season

Rn levels usually higher at winter. Yet a non-negligible fraction displays no seasonal pattern or follows the reverse behaviour.

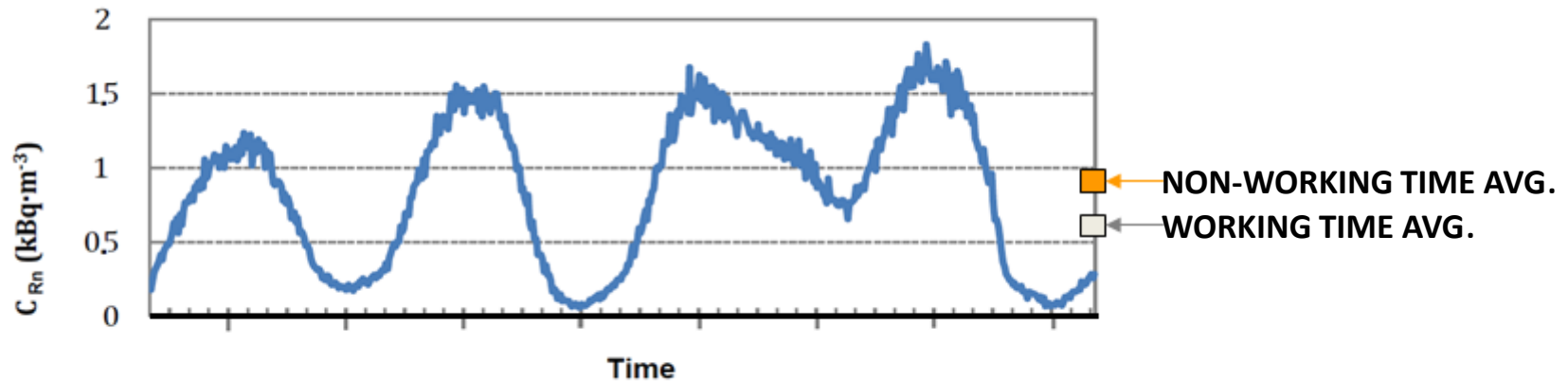




## 2. Workplace Regulation

### SG 11.4: Temporal sampling design. Short term

- Working time vs. non-working time concentration (day/night; weekend; holiday)



Ratio of correlated variables: based on at least **5 independent determinations** (day/night: 24 h long ; weekend: 72-h long) over non-consecutive days

## 2. Workplace Regulation

EU-BSS Article 54.3: “...action taken in accordance with the principle of *optimisation*”

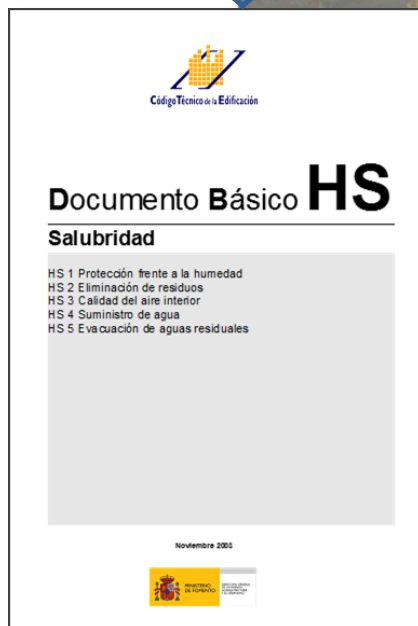


- Notification must include **Documentary Evidence**

## Provision of services



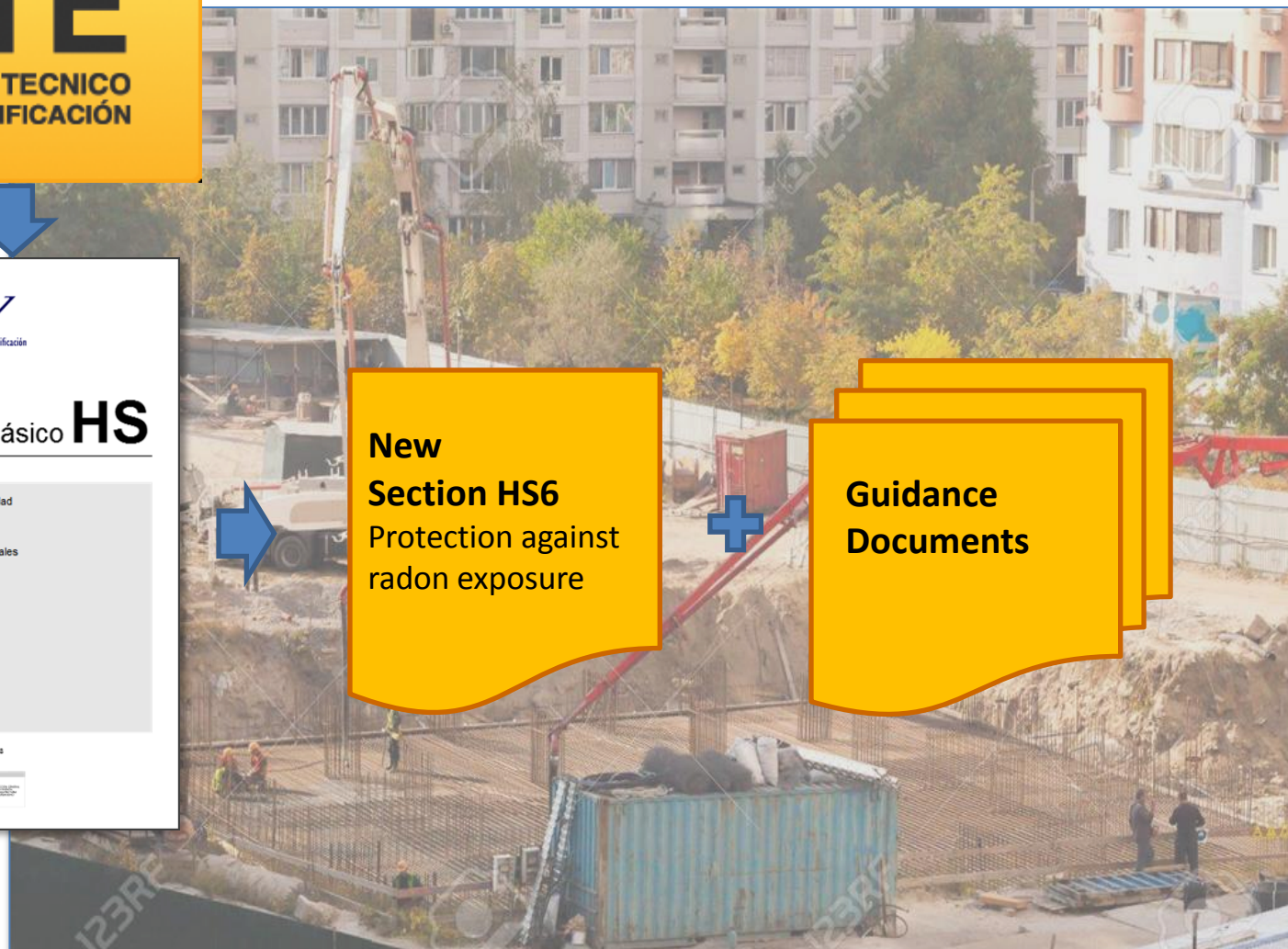
- **Rn measurement laboratories:** ISO 17025 accreditation
- **TRPU [RP advice, dose assessment]:**  
( $> 300 \text{ Bq/m}^3$ ): CSN authorisation. Duty to report on compliance breaches)
- **Rn personal dosimetry services:**  
CSN authorisation



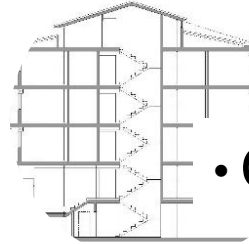
**New  
Section HS6**  
Protection against  
radon exposure



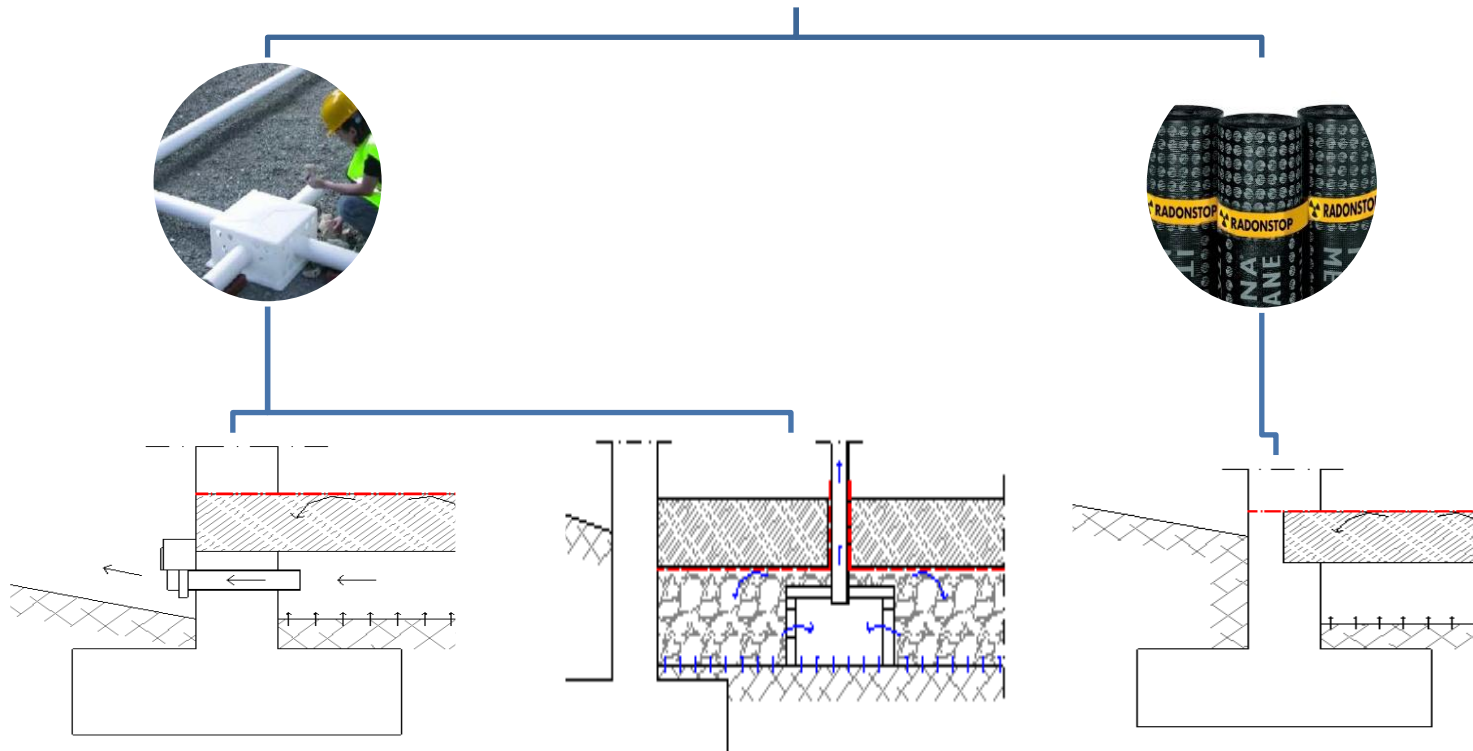
**Guidance  
Documents**



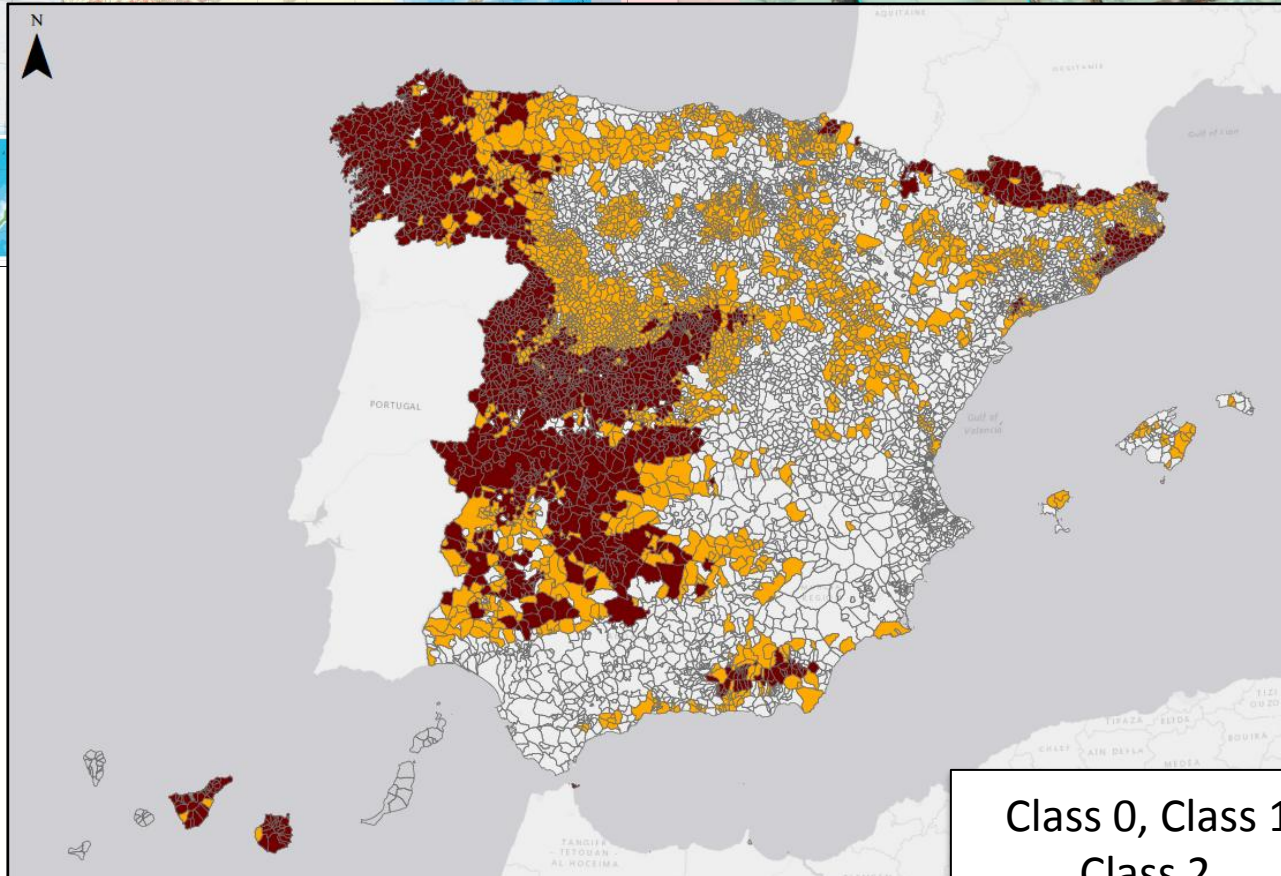
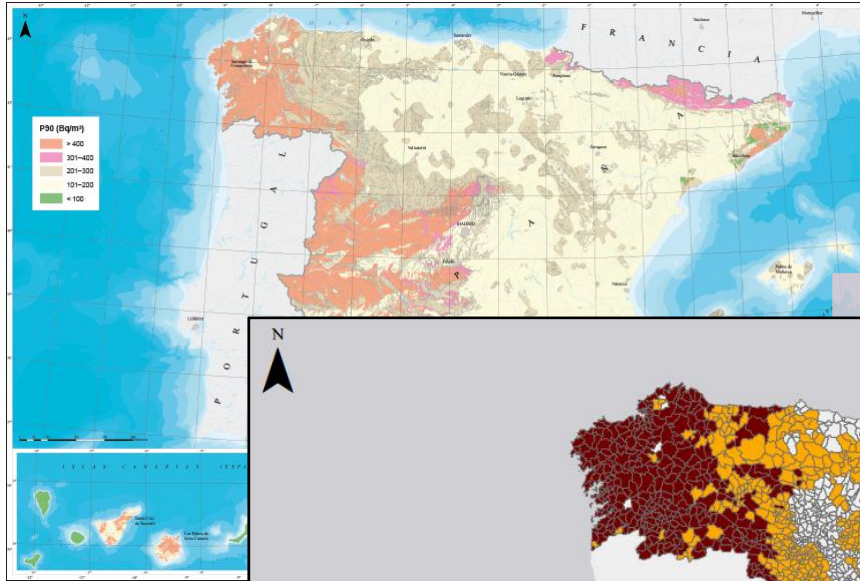
## New Buildings



- Classification by municipality



# 3. Building Regulation



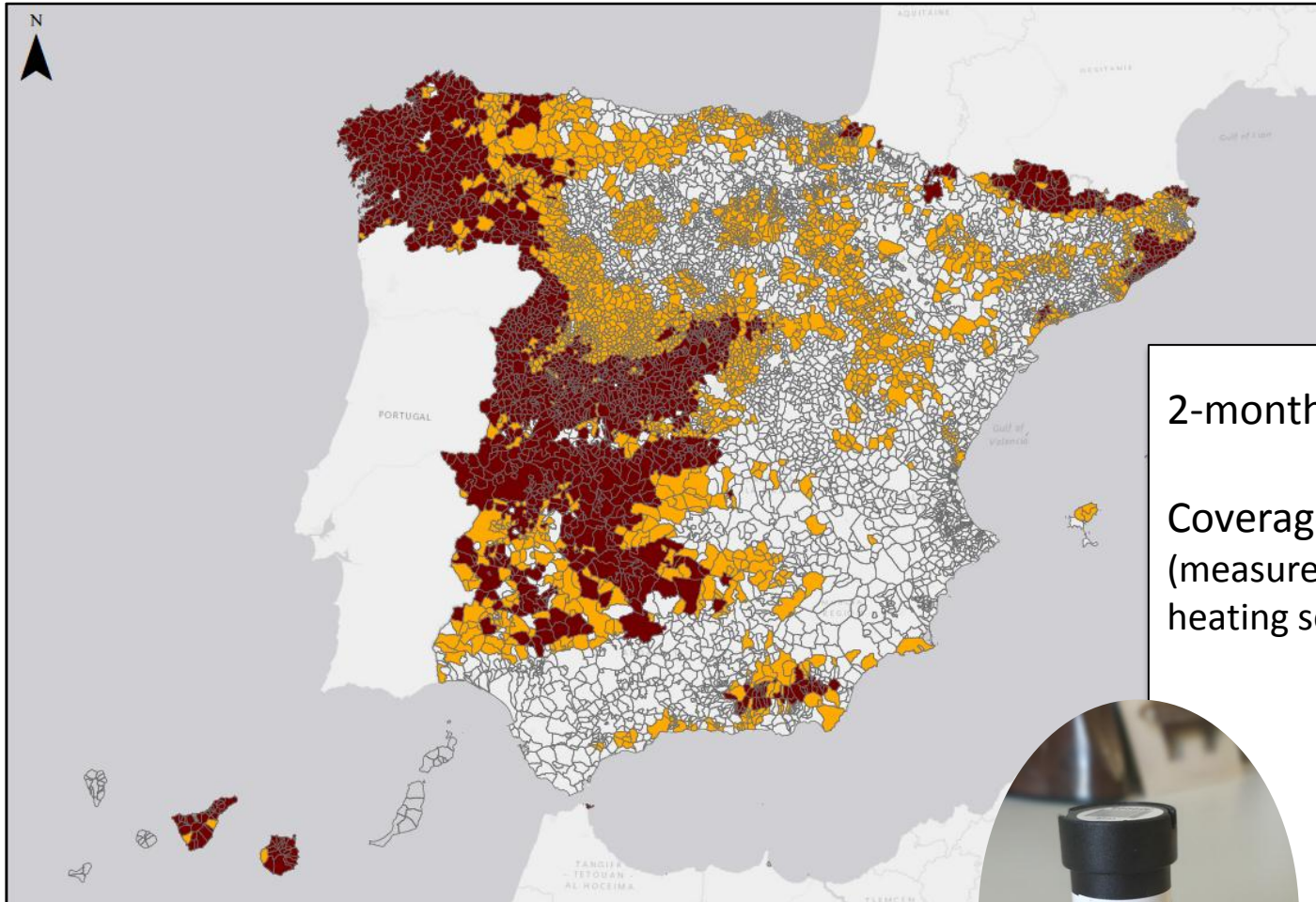
Class 0, Class 1,  
Class 2

## Existing Buildings



- ✓ Sealing of cracks and joins
- ✓ Improvement of crawl-space ventilation
- ✓ Improvement of the building ventilation system (BM)
- ✓ Soil depressurisation
- ✓ Radon barrier

# 3. Building Regulation



2-month test

Coverage factor: 1.4  
(measurements out of the heating season in zones C, D & E)





# Thank you for your attention!

Contact: Marta García-Talavera  
[mgtm@csn.es](mailto:mgtm@csn.es)